

# TINY HOUSE MOBILE 01/ 6,5 m CAMPSITE

PRICE STARTS AT

25 500 €



## Trailer technical information:

- 2.50 m x 6.50 m base (16.25 m floor space);
- 24 m<sup>2</sup> of usable area;
- Base made of galvanized steel and insulated with waterproof plywood or sheet metal, insulated with rock wool;
- Has European approval;
- Walls built using timber frame technology based on C24-certified chamber-dried structural timber elements
- Exterior and interior facade made of the highest quality wood, Scandinavian spruce;
- PUR foam or Rock wool insulation covers the entire structure: exterior walls, mezzanine floor and sub-floor;
- Interior wainscoting made of Scandinavian spruce;
- Anthracite-colored windows on the outside, white on the inside, double-glazed plastic windows;
- Two large mezzanine floors with sleeping space for 4 people;
- Plumbing system (water and sewage) with water connection from outside;
- 1 or 3-phase external connection and an internal installation 230V 1-phase;
- The trailer is equipped with an external 400V (house load up to 10 kW; connection power 32A);
- 2 ventilation points.

CONTACT US



+48 533 398 393



magdalena.kornafel@tinyhousemobile.pl

TINY HOUSE MOBILE 01 / 6,5 m

# CAMPSITE

Each our project can be ordered in 3 different interior design standards:

Developer (raw, closed), Basic, Classic, Premium (fully equipped, turnkey) or produced as fully customized product referring to the customer individual needs and preferences.

## PRICE LIST

Developer Standard

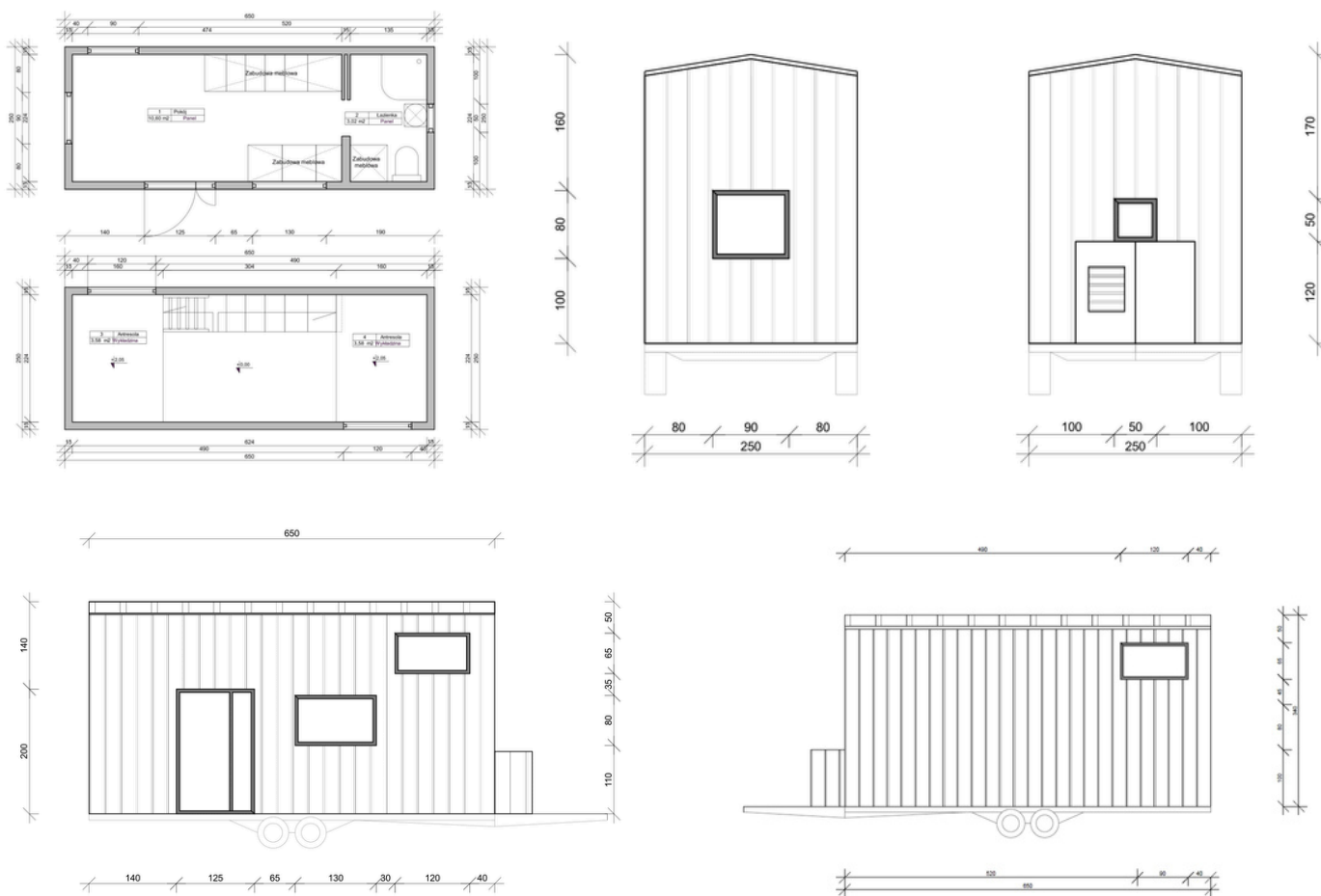
25 500 euro net price

Basic Standard

33 900 euro net price

Premium - Turnkey Standard

36 900 euro net price



TINY HOUSE MOBILE 03 / 7,2 m

PRICE STARTS AT

# FRENCH KISS

30 900 €



## Trailer technical information:

- 2,50 m x 7,20 m base (18,00 m floor space);
- 34 m2 of usable area;
- Base made of galvanized steel and insulated with waterproof plywood or sheet metal, insulated with rocket wool;
- Has European approval;
- Walls built using timber frame technology based on C24-certified chamber-dried structural timber elements;
- Exterior and interior facade made of the highest quality wood, Scandinavian spruce;
- PUR foam or Rock wool insulation covers the entire structure: exterior walls, mezzanine floor and sub-floor;
- Interior wainscoting made of Scandinavian spruce;
- Anthracite-colored windows on the outside, white on the inside, double-glazed plastic windows;
- 2 large mezzanine floors with sleeping space for 4 people;
- Plumbing system (water and sewage) with water connection from outside;
- 1 or 3-phase external connection and an internal installation 230V;
- The trailer is equipped with an external 400V (house load up to 10 kW; connection power 32A);
- 2 ventilation points.

CONTACT US



+48 533 398 393



magdalena.kornafel@tinyhousemobile.pl

TINY HOUSE MOBILE 03 / 7,2 m

# FRENCH KISS

Each our project can be ordered in 3 different interior design standards:

Developer (raw / closed), Basic, Classic, Premium (fully equipped / turnkey) or produced as fully customized product referring to the customer individual needs and preferences.



## PRICE LIST

Developer Standard

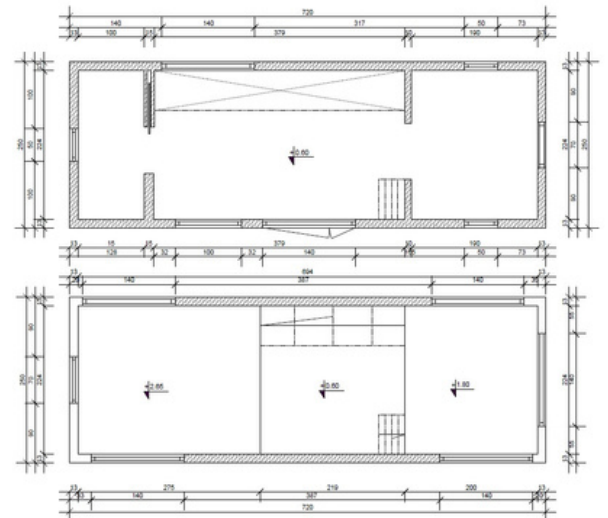
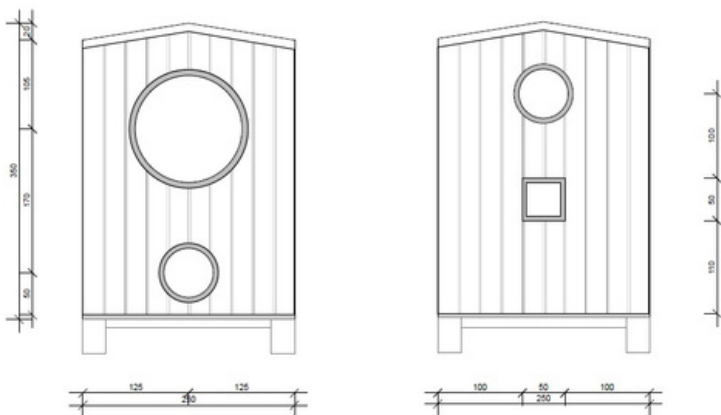
Basic Standard

Premium - Turnkey Standard

30 900 euro net price

40 900 euro net price

45 900 euro net price



TINY HOUSE MOBILE 04 / 7,2 m

PRICE STARTS AT

# FOREST

30 900 €



## Trailer technical information:

- 2,50 m x 7,20 m base (18,00 m floor space);
- 34 m<sup>2</sup> of usable area;
- Base made of galvanized steel and insulated with waterproof plywood or sheet metal, insulated with rocket wool;
- Has European approval;
- Walls built using timber frame technology based on C24-certified chamber-dried structural timber elements;
- Exterior and interior facade made of the highest quality wood, Scandinavian spruce;
- Rock wool insulation covers the entire structure: exterior walls, mezzanine floor and sub floor;

- Interior wainscoting made of Scandinavian spruce;
- Anthracite-colored windows on the outside, white on the inside, double-glazed plastic windows;
- 2 large mezzanine floors with sleeping space for 4 people;
- Plumbing system (water and sewage) with water connection from outside;
- 1 or 3-phase external connection and an internal installation 230V;
- The trailer is equipped with an external 400V (house load up to 10 kW; connection power 32A);
- 2 ventilation points.

CONTACT US



+48 533 398 393



magdalena.kornafel@tinyhousemobile.pl

TINY HOUSE MOBILE 04 / 7,2 m

# FOREST

Each our project can be ordered in 3 different interior design standards:

Developer (raw / closed), Basic and Premium (fully equipped / turnkey) or produced as fully customized product referring to the customer individual needs and preferences.



## PRICE LIST

Developer Standard

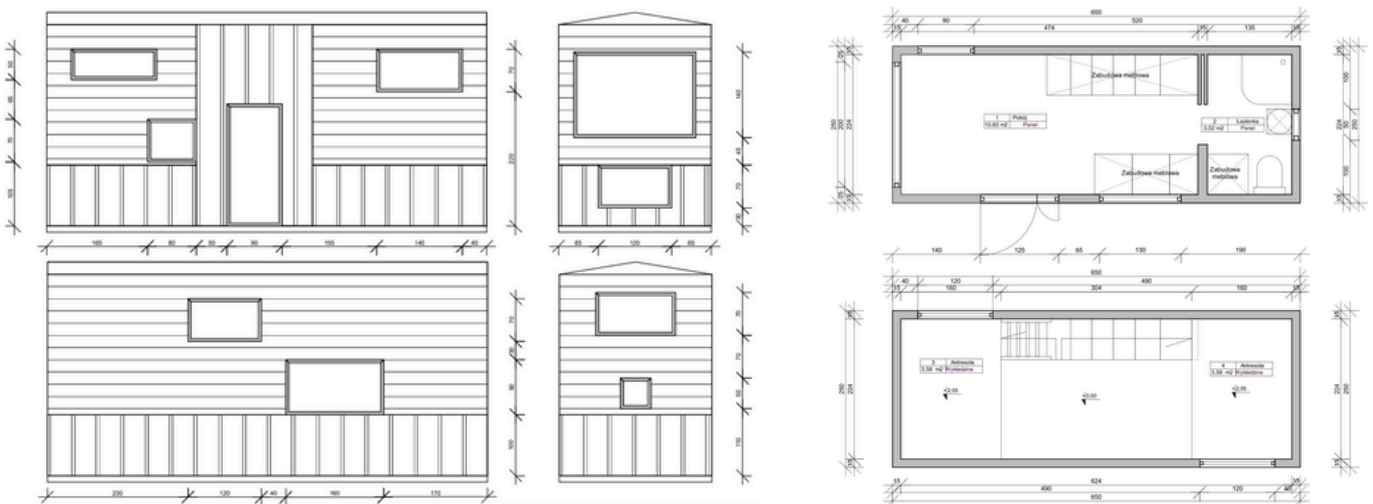
Basic Standard

Premium - Turnkey Standard

30 900 euro net price

40 900 euro net price

45 900 euro net price



TINY HOUSE MOBILE 05 / 6,5 m

PRICE STARTS AT

# PORTO

26 900 €



## Trailer technical information:

- 2.50 m x 6.50 m base (16.25 m floor space);
- 24 m<sup>2</sup> of usable area;
- Base made of galvanized steel and insulated with waterproof plywood or sheet metal, insulated with rock wool;
- Has European approval;
- Walls built using timber frame technology based on C24-certified chamber-dried structural timber elements;
- Exterior and interior facade made of the highest quality wood, Scandinavian spruce;
- PUR foam insulation covers the entire structure: exterior walls, mezzanine floor and subfloor;
- Interior wainscoting made of Scandinavian spruce;
- Anthracite-colored windows on the outside, white on the inside, double-glazed plastic windows;
- Two large mezzanine floors with sleeping space for 4 people;
- Plumbing system (water and sewage) with water connection from outside;
- 1 or 3-phase external connection and an internal installation 230V 1-phase;
- The trailer is equipped with an external 400V (house load up to 10 kW; connection power 32A);
- 2 ventilation points.

CONTACT US



+48 533 398 393



magdalena.kornafel@tinyhousemobile.pl

TINY HOUSE MOBILE 05 / 6,5 m

# PORTO

Each our project can be ordered in 3 different interior design standards:

Developer (raw / closed), Basic, Premium (fully equipped / turnkey) or produced as fully customized product referring to the customer individual needs and preferences.

## PRICE LIST

Developer Standard

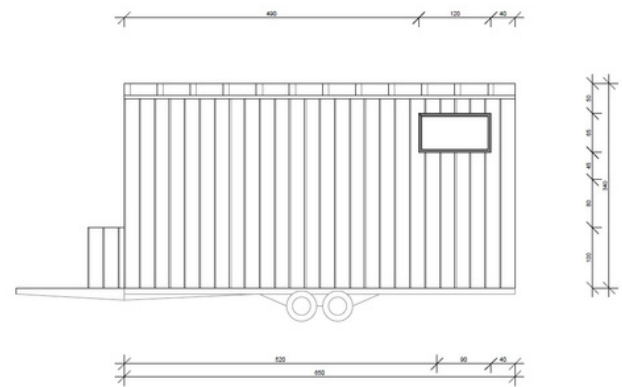
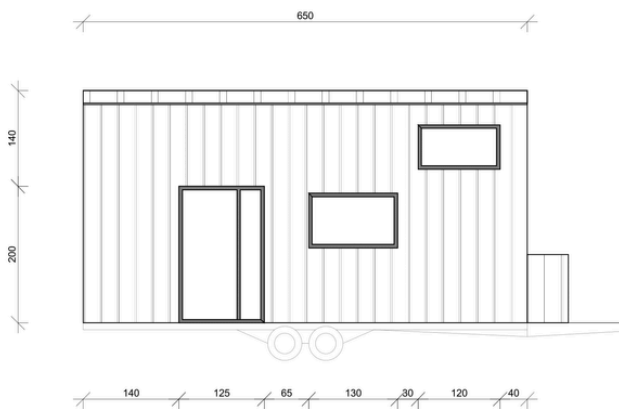
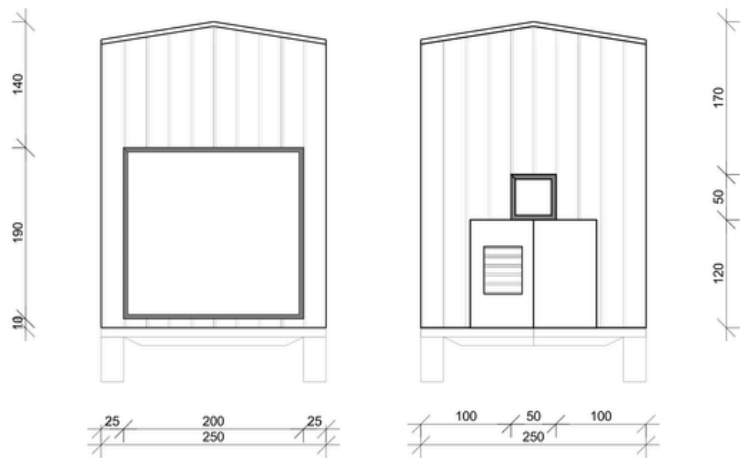
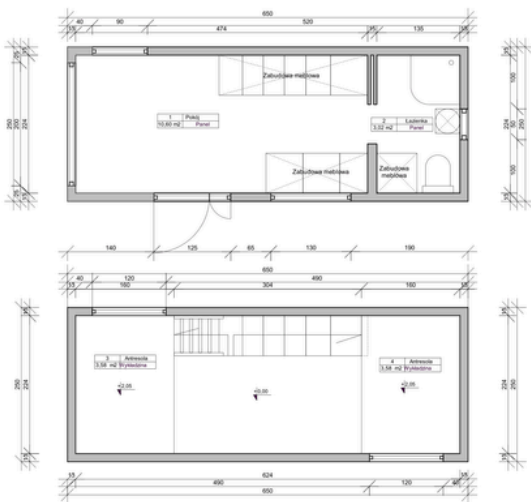
26 900 euro net price

Basic Standard

34 900 euro net price

Premium - Turnkey Standard

38 900 euro net price





TINY HOUSE MOBILE 06 / 7,2 m

PRICE STARTS AT

# FRENCH ALPS

32 900 €



## Trailer technical information:

- 2,50 m x 7,20 m base (18,00 m floor space);
- 36 m<sup>2</sup> of usable area;
- Base made of galvanized steel and insulated with waterproof plywood or sheet metal, insulated with rocket wool;
- Has European approval;
- Walls built using timber frame technology based on C24-certified chamber-dried structural timber elements;
- Exterior and interior facade made of the highest quality wood, Scandinavian spruce;
- PUR foam insulation covers the entire structure: exterior walls, mezzanine floor and sub-floor;

- Interior wainscoting made of Scandinavian spruce;
- Anthracite-colored windows on the outside, white on the inside, double-glazed plastic windows;
- 2 large mezzanine floors with sleeping space for 4 people;
- Plumbing system (water and sewage) with water connection from outside;
- 1 or 3-phase external connection and an internal installation 230V;
- The trailer is equipped with an external 400V (house load up to 10 kW; connection power 32A);
- 2 ventilation points.

CONTACT US



+48 533 398 393

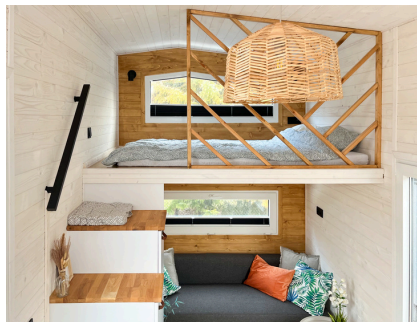


magdalena.kornafel@tinyhousemobile.pl

TINY HOUSE MOBILE 06 / 7,2 m

# FRENCH ALPS

Each our project can be ordered in 3 different interior design standards:  
Developer (raw / closed), Basic, Premium (fully equipped / turnkey) or produced  
as fully customized product referring to the customer individual needs and preferences.



## PRICE LIST

Developer Standard

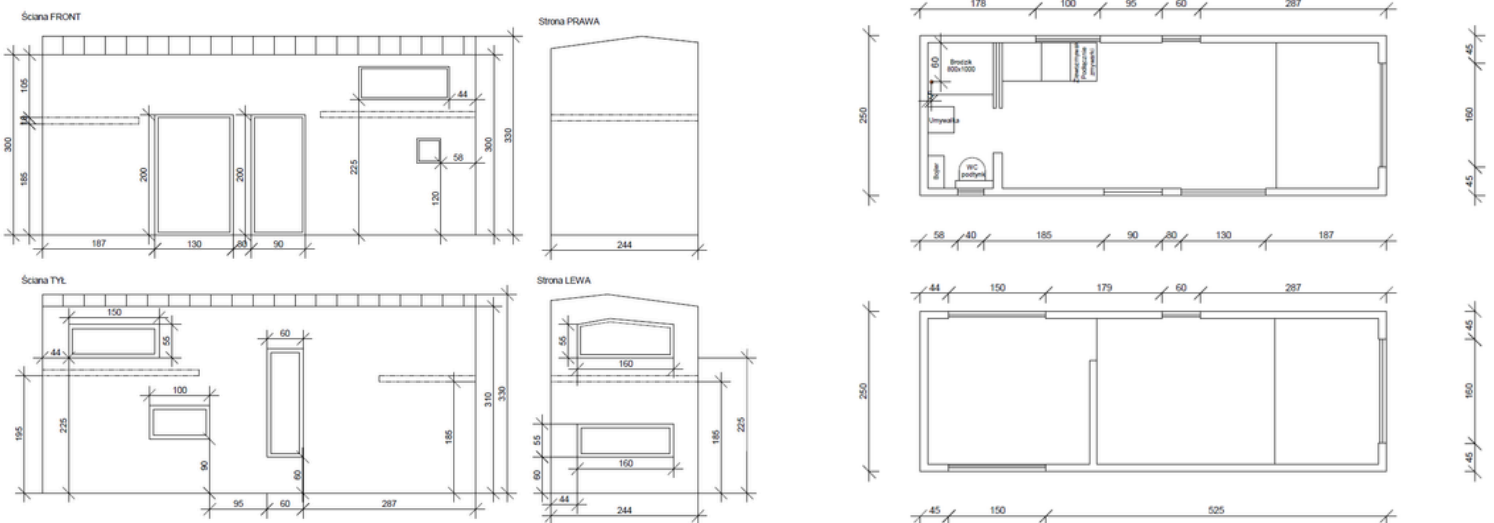
Basic Standard

Premium - Turnkey Standard

32 900 euro net price

41 900 euro net price

48 900 euro net price

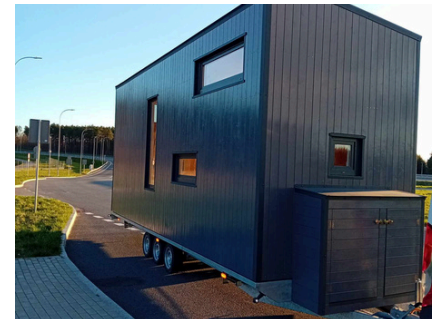


TINY HOUSE MOBILE 07 / 7,2 m

PRICE STARTS AT

# SURF BAY

33 900 €



## Trailer technical information:

- 2.50 m x 7,20 m base (18.00 m floor space);
- 34-36 m<sup>2</sup> of usable area;
- Base made of galvanized steel and insulated with waterproof plywood or sheet metal, insulated with rock wool;
- Has European approval;
- Walls built using timber frame technology based on C24-certified chamber-dried structural timber elements;
- Exterior and interior facade made of the highest quality wood, Scandinavian spruce;
- PUR foam insulation covers the entire structure: exterior walls, mezzanine floor and sub-floor;
- Interior wainscoting made of Scandinavian spruce;
- Anthracite-colored windows on the outside, white on the inside, double-glazed plastic windows;
- Two large mezzanine floors with sleeping space for 4 people;
- Plumbing system (water and sewage) with water connection from outside;
- 1 or 3-phase external connection and an internal installation 230V 1-phase;
- The trailer is equipped with external 400V electricity (house load up to 10 kW; connection power 32A);
- 2 ventilation points.

CONTACT US

+48 533 398 393

magdalena.kornafel@tinyhousemobile.pl

TINY HOUSE MOBILE 07 / 7,2 m

# SURF BAY

Each our project can be ordered in 3 different interior design standards:

Developer (raw-closed), Basic, Classic, Premium (fully equipped, turnkey) or produced as fully customized product referring to the customer individual needs and preferences.



## PRICE LIST

Developer Standard

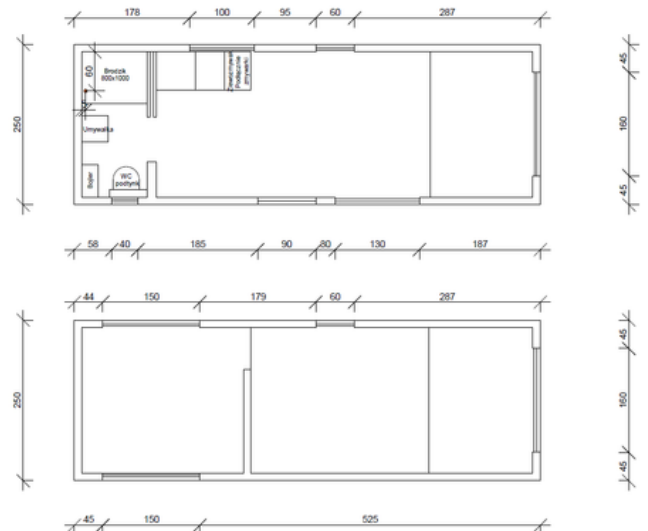
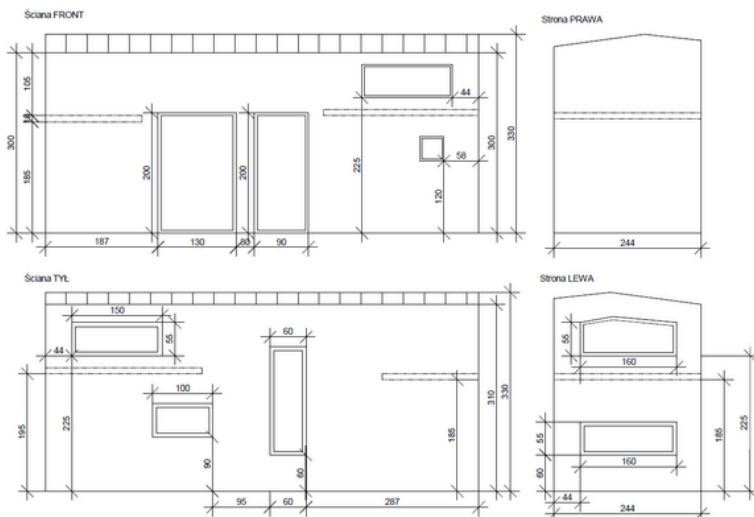
Basic Standard

Premium - Turnkey Standard

33 900 euro net price

42 900 euro net price

50 900 euro net price



Sweet Gallery / 02-231 Warsaw, 99/101 Jutrzenki Street

# PRICE LIST

---

## Tiny House Mobile 01 / 6,5 m

---

Developer Standard	25 500 euro net price	109 900 pln netto
Basic	33 900 euro net price	144 900 pln netto
Premium - Turnkey	36 900 euro net price	159 900 pln netto

---

## Tiny House Mobile 03-04 / 7,2 m

---

Developer Standard	30 900 euro net price	134 900 pln netto
Basic	40 900 euro net price	174 900 pln netto
Premium - Turnkey	45 900 euro net price	199 900 pln netto

---

## Tiny House Mobile 05 / 6,5 m

---

Developer Standard	26 900 euro net price	114 900 pln netto
Basic	34 900 euro net price	149 900 pln netto
Premium - Turnkey	38 900 euro net price	169 900 pln netto

---

## Tiny House Mobile 06 / 7,2 m

---

Developer Standard	32 900 euro net price	139 900 pln netto
Basic	41 900 euro net price	179 900 pln netto
Premium - Turnkey	48 900 euro net price	209 900 pln netto

---

## Tiny House Mobile 07 / 7,2 m

---

Developer Standard	33 900 euro net price	144 900 pln netto
Basic Standard	42 900 euro net price	184 900 pln netto
Premium - Turnkey	50 900 euro net price	219 900 pln netto

---

\* Agreements are provided in Polish zlotys (PLN). The price below may change depending on the current EURO exchange rate.

**TINY HOUSE**

*Expand your offer and start earning with Tiny House Mobile!*

## DEVELOPER STANDARD

### Trailer finish standard

#### BASE ENVELOPE SIZE 2.5 M X 6.5 - 7.2 M (16.25 - 18 M OF CIRCUMFERENCE)

- the base is made of galvanized steel and insulated with water-proofed plywood or sheet metal;
- with mineral wool in compliance;
- with European type approval.

#### TIMBER-FRAMED WALLS

- based on wooden elements made of construction timber;
- made of oven-dried;
- C24-certified structural lumber.

#### EXTERIOR AND INTERIOR WALL CLADDING MADE OF SUPERIOR QUALITY TIMBER - SCANDINAVIAN SPRUCE

#### FULL ROCK WOOL INSULATION OF THE STRUCTURE (OR PUR FOAM)

- exterior walls, the base and the ceiling

#### INTERIOR WALL PANELING OF SCANDINAVIAN SPRUCE

#### WINDOWS ANTHRACITE ON THE OUTSIDE AND WHITE ON THE INSIDE, WITH DOUBLE GLAZING

#### TWO LARGE MEZZANINES ACCOMMODATE 4 SLEEPERS

#### PLUMBING (WATER SUPPLY AND DRAINAGE)

#### ELECTRICAL WIRING WITH BRANCHES OUTGOING FROM J-BOXES, WITHOUT TERMINAL UNITS

#### 2 VENTILATION SPOTS

Expand your accommodation and start earning with Tiny House Mobile!



## BASIC STANDARD

### TRAILER FINISH STANDARD

- Base envelope size 2.5 m x 6.5-7.2 m (16.25 - 18 m of circumference);
- The base is made of galvanized steel and insulated with water-proofed plywood or sheet metal with mineral wool in compliance with European type approval;
- Timber-framed walls made of oven-dried and C24-certified structural lumber;
- Exterior and interior wall cladding made of superior quality timber – Scandinavian spruce;
- Full rock wool insulation of the structure: exterior walls, the base and the ceiling;
- Interior wall paneling of Scandinavian spruce;
- Windows anthracite on the outside and white on the inside, with double glazing;
- Two large mezzanines accommodate 4 sleepers. Plumbing (water supply and drainage);
- Electrical wiring with branches outgoing from J-boxes, without terminal units;
- 2 air ventilation spots.

### BASIC FURNISHINGS (FITTINGS)

#### Overall Finish

- Cabinetry with handles;
- Carpeted mezzanines;
- Flooring panels (vinyl panels);
- Underfloor heating;
- Wooden stairs and ladder.

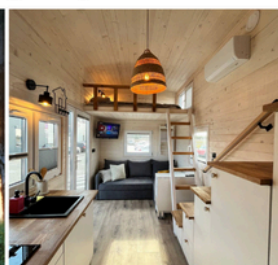
#### Kitchen

- Kitchen cabinetry with handles;
- Counter top sink with a tap;
- Induction hob / 2 spots;
- Connection to a dishwasher.

#### Bathroom

- Shower cabin with a top;
- Washbasin bowl with a tap;
- Ceramic toilet (close-coupled);
- 50 L electric water boiler;
- Electric heater installed on the wall;
- Sliding door + door guide;
- Connection to a washing machine.

Expand your accommodation and start earning with Tiny House Mobile!



## PREMIUM STANDARD

### TRAILER FINISH STANDARD

- Base envelope size 2.5 m x 6.5-7.2 m (16.25 - 18 m of circumference);
- The base is made of galvanized steel and insulated with water-proofed plywood or sheet metal with mineral wool in compliance with European type approval;
- Timber-framed walls made of oven-dried and C24-certified structural lumber;
- Exterior and interior wall cladding made of superior quality timber – Scandinavian spruce;
- Full rock wool insulation of the structure: exterior walls, the base and the ceiling;
- Interior wall paneling of Scandinavian spruce;
- Windows anthracite on the outside and white on the inside, with double glazing;
- Two large mezzanines accommodate 4 sleepers. Plumbing (water supply and drainage);
- Electrical wiring with branches outgoing from J-boxes, without terminal units;
- 2 air ventilation spots.

### BASIC FURNISHINGS (FITTINGS)

#### Overall Finish

- Cabinetry with handles;
- Carpeted mezzanines;
- Flooring panels (vinyl panels);
- Underfloor heating;
- Wooden stairs and ladder.

#### Kitchen

- Kitchen cabinetry with handles;
- Counter top sink with a tap;
- Induction hob / 2 spots.

#### Bathroom

- Shower cabin with a top;
- Washbasin bowl with a tap;
- Ceramic toilet (close-coupled);
- 50 L electric water boiler;
- Electric heater installed on the wall;
- Sliding door + door guide.

### TURNKEY FINISHING

- Sofa;
- Folding table;
- Chairs, 2 pcs.
- Sleeping mattresses on the mezzanines;
- Window blinders.
- Full electric lighting: indoor & outdoor spot lights, a main lamp, a bathroom lighting;
- Wall handrail with LED light;
- Wall decoration;
- 2 x small wall-installed shelves;
- Bathroom mirror.

### HOME / RTV APPLIANCES

- Washing machine;
- Dishwasher;
- Refrigerator;
- TV set on a wall mount;
- Air conditioner with heating function.

Expand your accommodation and start earning with Tiny House Mobile!

