

I Love Tiny

nature inclusive cabins

“Solution for your mindful getaway...”



“At I Love Tiny, we combine Dutch design with Ukrainian craftsmanship keeping in mind the importance of sustainability, quality and aesthetics.”

Yaro,
co-founder of I Love Tiny | Nature inclusive cabins



Model R - 15m2
Treated wood (spruce)
facade in black



Our expertise and flexible approach allows you to **configure your own interior space, exterior finishes, and many more extras.**

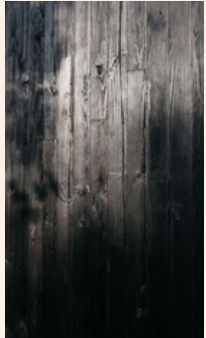
The structure is a **no thermal bridges structure steel frame.** This structure makes it easy to transport, by lightening the total weight of the module.

Model R - 15m²
Treated wood (spruce)
facade in brown



All our cabins are conceived and designed as mobile homes which comply with both **Dutch building code requirements** and with **European road regulations**.

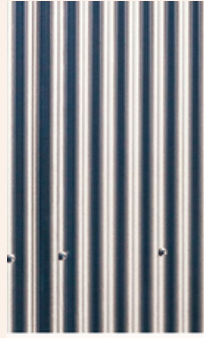
Depending on plot features and your own requirements, you can choose either on-grid or (partially) off-grid option configuring both exterior and interior spaces.



Spruce in black or any other wood finish



corten steel



galvanized steel



Choose your exterior finish...

The exterior materials have been chosen for their **strength and durability**. This helps to achieve practically **zero maintenance**. In addition, these materials **integrate well into the landscape**, so we can help you choose the one that best suits the condition of your specific environment.



birch wood
(walls and
ceiling)



natural wood
any kind
(floor)



premium
PVC/linoleum
(floor)



birch walls and ceiling, oak floor



birch walls and ceiling, premium PVC floor

Choose your
interior finish...

For the interiors we use woods and premium PVC/linoleum from Forbo that create a warm and welcoming atmosphere, in contrast to the exterior.

All the woods we use are local, minimizing their ecological footprint.)

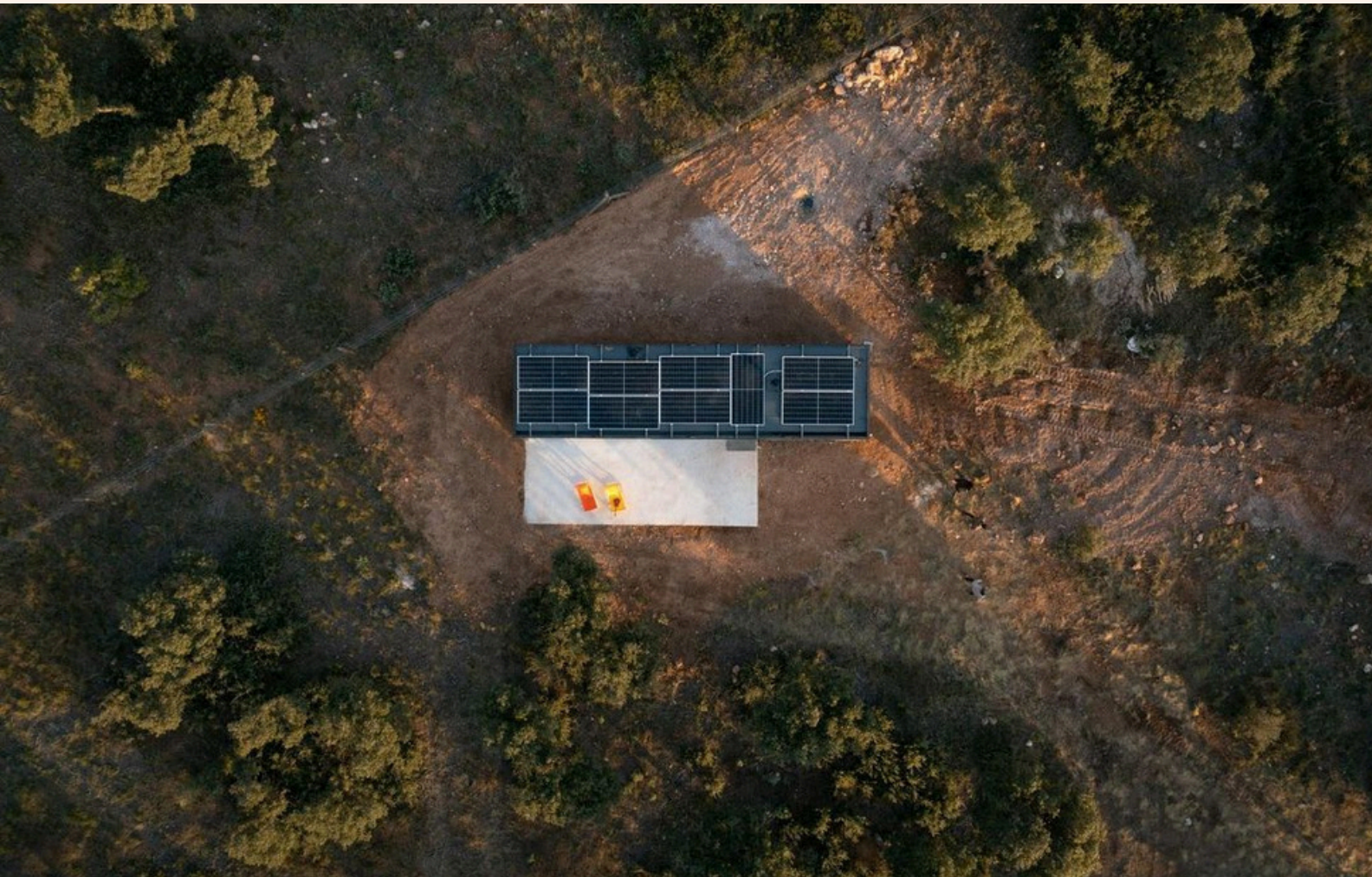


One aspect that we take special care of is the issue of thermal insulation.

To **ensure comfort throughout the year**, we use 100 mm of PUR foam insulation, which is equivalent to a 1.5-meter concrete wall in terms of thermal performance. PUR foam offers the **best thermal insulation among all** practical cavity insulants. We meticulously **eliminate thermal bridges** in the entire house structure to prevent potential moisture issues, which could cause long-term damage to the house.



Model S - 15m²
Galvanized steel cladding



- 01 water tank
- 02 septic tank
- 03 solar panels
- 04 composting toilet
- 05 side storage box
- 06 modular patio, outdoor furniture, sailing tent
- 07 wood stove & chimney
- 08 park or mobile trailer with adjustable legs (jacks)

Choose your **add-ons**

You can connect our cabin to the supply network (water, electricity and sanitation) or choose to be **totally or partially self-sufficient**. If it is self-sufficient, a detailed research related to the demand, use and location of the cabin(s) will be carried out.



example of sink and sink faucet



example of 80L INDESIT fridge with freezer



example of air recuperator

The suitability of a type of architecture or a correct design goes far beyond aesthetics, but the details are undoubtedly essential.

Our cabins include in the price the **lighting, fully equipped kitchen and bathroom including all necessary utilities** like fire resistant cabling throughout, switches and outlets, lighting, plumbing, external cold water inlet with filter and pressure control, electrical heater, heat recovery air unit, exhaust vent at the bathroom.



Permits

Regulations and building permits can be difficult to navigate, and can have significant changes at the regional or local levels.

But in many European countries, because our cabins are mobile and can be moved from place to place within 24 hours, **building permits are not required.**



Structural foundation and transportation

Our cabins are designed to be less than 3,5t due to European road restrictions and for ease of installation - **no specific equipment or crane are needed.**

Transport and installation are not included in the price because it is matter of individual calculation based on your location and project specifics.

We can manage the execution of both so that you do not have to deal with anything.



I Love Tiny Cabin Journey

10-12 weeks of production

Step 1 Detailed quotation

After we have all the information we need, we prepare a detailed quote for you. If you are satisfied with the price and terms in the contract, we are ready to go into production.

10% deposit

Step 2 Final order & start of production

Prior to construction, any special requests or custom elements must be integrated into the final engineering package needed to produce your cabin.

40% contract signing

Step 3 Confirmation of shipment & ordering transportation

At this stage, we recommend that you lay out and prepare your site ready to receive your new cabin.

30% payment 3 weeks before shipment

Step 4 Shipment released

And it's on its way! Congratulations, soon you will own your own beautiful I Love Tiny Cabin.

40% Final payment



Financing options

Direct purchase. The cost of the turn-key cabin is **€42,000 all-in** (excl. VAT and transport)*.

Financial lease. From €770,- per month /60 mo.

*- To make the cabin mobile and fully autonomous, you can additionally install a trailer and off-grid system for €3,500 to €10,000 depending on the equipment.

Contact

I Love Tiny | Natuurinclusieve cabins

Visit us at Demopark Almere

Daniël Goedkoopstraat 30, 1349 GJ Almere

+31 6 1405 1868

www.ilovetiny.nl

info@ilovetiny.nl

NON-BINDING APPOINTMENT BOOKING

